

BOWEN ISLAND OCP UPDATE

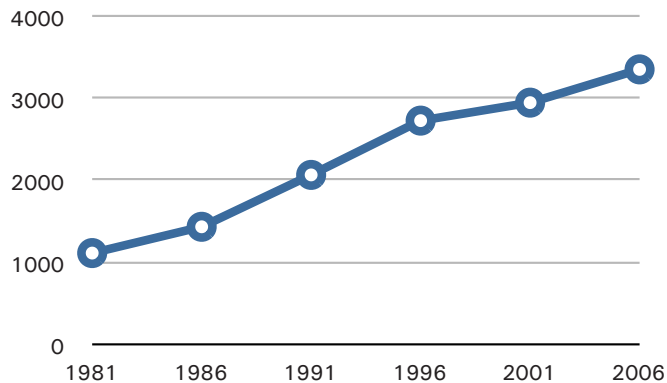
POPULATION GROWTH

Bowen Island is home to 3,362 permanent residents and several hundred part-time residents. The island has experienced steady growth over the past three decades, with a 6.9% annual growth rate between 1981 and 1996, and a 2.5% annual growth rate between 1996 and 2006.

Compared to the Metro Vancouver Region and Province of BC, Bowen Island is one of the fastest growing municipalities with an overall growth in population of 13.7% between 2001 and 2006 compared to 6.5% growth in the Vancouver CMA, and 5.3% province-wide.

Despite this seemingly rapid growth, Bowen Island population is becoming more stable. According to the 2006 census, roughly 60% of Bowen's population has lived at the same address for at least five years. This is an increase from the previous census in 2001 when the number recorded was 49%.

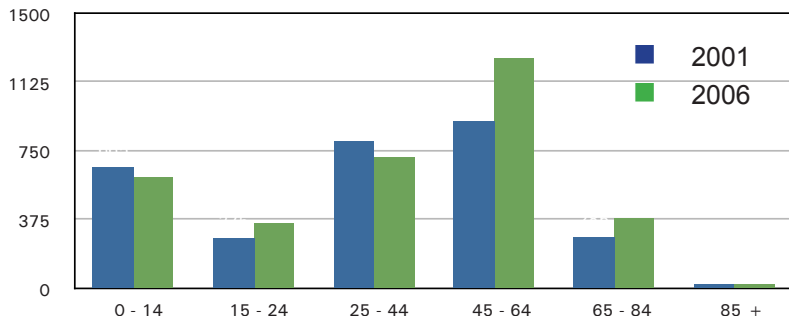
Population Growth, 1981 to 2006



POPULATION DISTRIBUTION

Similar to many BC communities, Bowen Island is aging. Between 2001 and 2006, the median age increased from 41.4 to 44.8, compared to 37.4 to 39.1 in the Vancouver CMA. Looking at Bowen Island's population profile more closely reveals some interesting facts about the community. The largest age cohort is middle aged, between 45 and 64. This segment of the population had the most growth between 2001 and 2006, increasing by 37%. Those representing the smallest share of the population include the 15 - 24, 65 - 84 and 85+ age groups although, notably, the 15 - 24 and 65 - 84 age groups grew by 31% and 37% respectively between 2001 and 2006. At the same time, the 0 - 14 and 25 - 44 age groups declined by 8% and 10% respectively, and the number of people aged 85 and older remained the same.

Population Age Distribution, 2001 to 2006

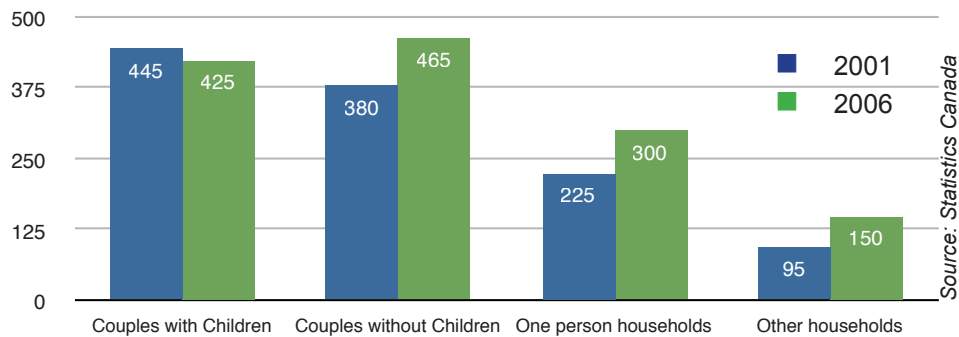


Source: Statistics Canada

HOUSEHOLD DISTRIBUTION

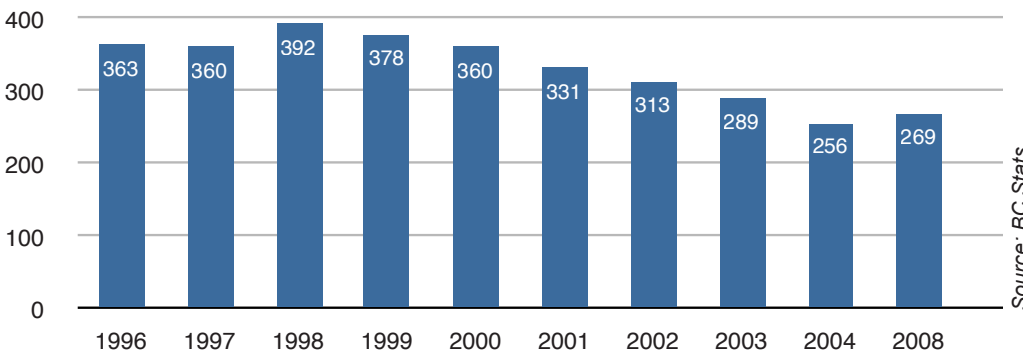
Bowen's household distribution is changing. In 2001, couples with children were the dominant household type on Bowen Island but by 2006, couples without children had become the dominant household type. Between 2001 and 2006, the number of households consisting of couples with children decreased by 4%. During the same period, the number of couples without children, one person households and other households (such as single parents and unrelated individuals) increased by 22%, 33% and 58% respectively.

Household Distribution, 2001 to 2006



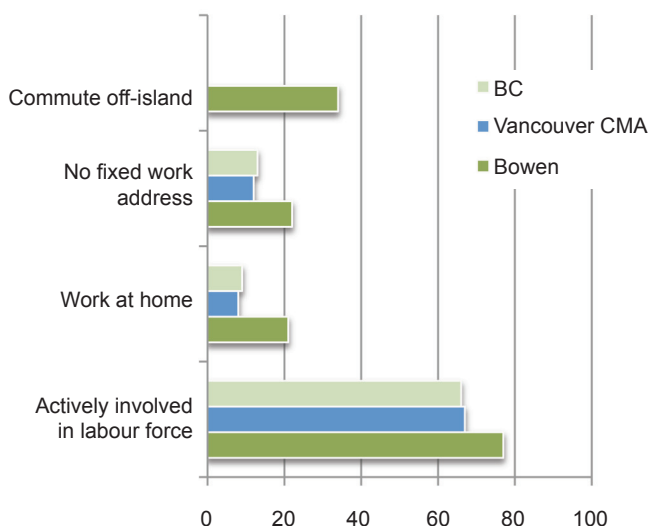
SCHOOL AGED POPULATION

BC Stats projections indicate that the school age population in the West Vancouver Local Health Area will decline between 2001-2011 from 8,506 children to 6,724 children at an average annual rate of -2.3%, followed by a slight increase to 6,934 children by 2,021 at an average annual rate of 0.3% between 2011-2021. This trend is related to an overall aging of the population with fewer young families in the community.



School enrollment has declined from 363 students in 1996 to 269 students in 2008.

LABOUR FORCE* CHARACTERISTICS



* age 15+

PLANNING CONSIDERATIONS

- What local and external factors will affect the future rate of population growth?
- Bowen's population is aging. How are seniors' needs being considered?
- The number of children and young adults has declined. How can Bowen Island better meet the needs of these population groups?